

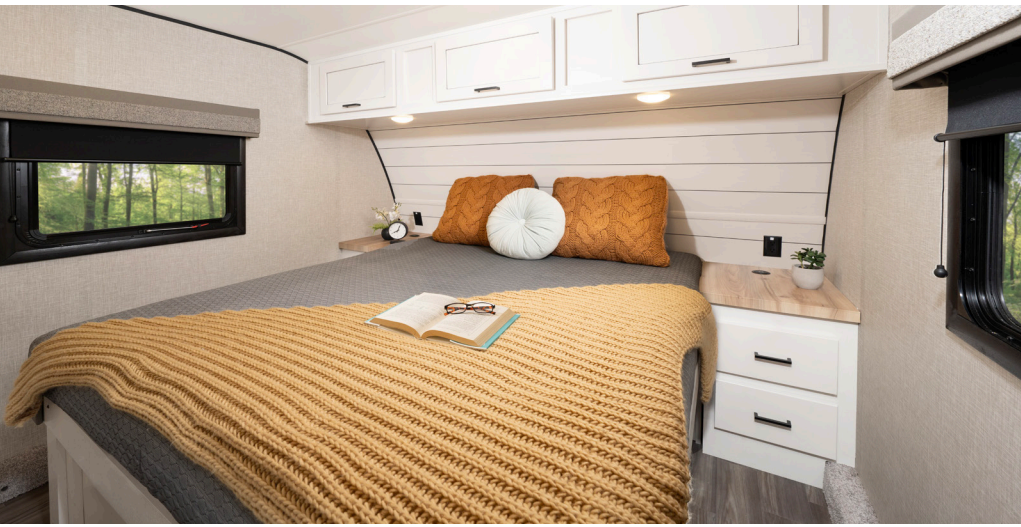
ROAMER LIGHT DUTY

2024 FIFTH WHEELS

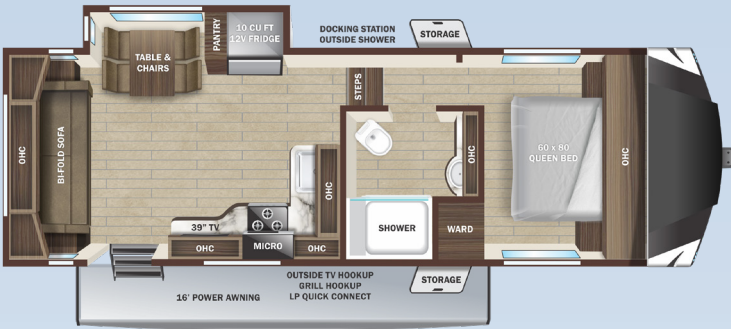


Open Road Ready





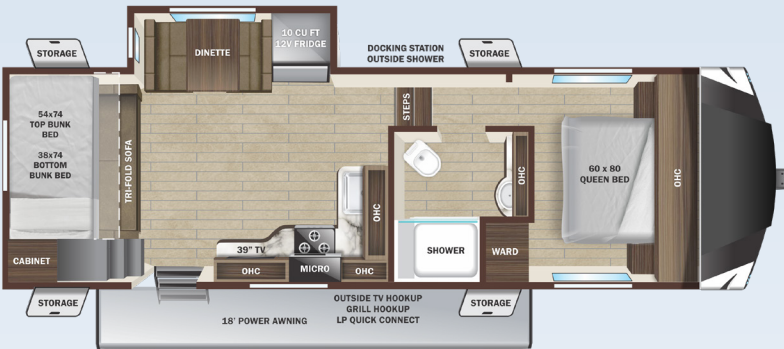
2024 Roamer Light Duty



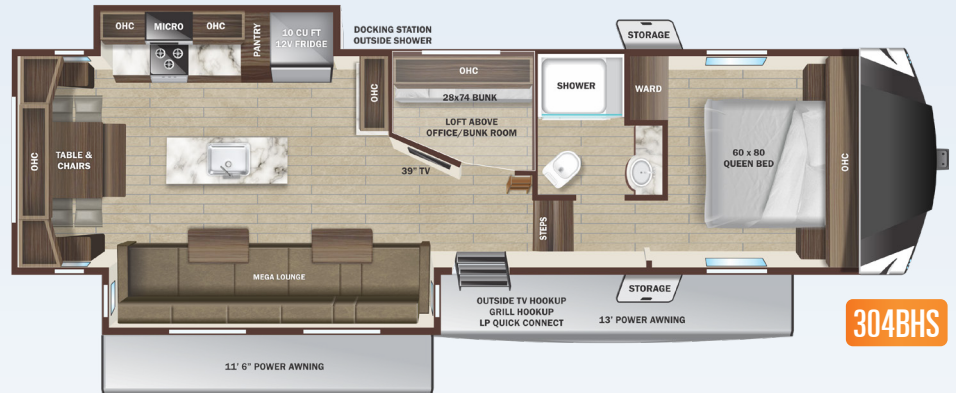
234RLS OPTION A



244RLS OPTION A & B



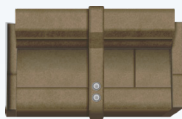
274BHS OPTION C



304BHS



A



THEATER SEAT

B



DINETTE OPTION

C

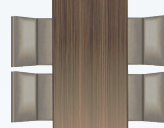


TABLE & CHAIRS/BENCH OPTION

STANDARD INTERIOR EQUIPMENT

- » 9 cu. ft. Microwave
- » 10 cu. ft. 12V refrigerator
- » 60" x 80" residential queen bed
- » 75 lb. ball bearing drawer guides
- » Cable and satellite prep
- » Flush floor slides with residential vinyl flooring
- » Hardwood cabinet doors
- » Hardwood slideout fascia
- » LED interior lighting
- » Observation camera prep
- » Oven and 3-burner range with flush mount glass cover
- » Roller blackout night shades

STANDARD EXTERIOR EQUIPMENT

- » 100" wide body frame
- » 2" receiver hitch
- » 3-20 lb. LP bottles
- » 50 amp service
- » ACCU-SLIDE™ slide system (4-corner compression)
- » Battery disconnect switch
- » Brass hanger bushings with wet bolts
- » Equa-Flex® axle suspension
- » Exterior grill/griddle quick connect port
- » Laminated block foam floor
- » LevelLoc™ - 4 point automatic leveling with JT's Strong Arms®
- » PVC roofing membrane (limited lifetime warranty)
- » Rear roof access ladder prep

- » Self-adjusting electric brakes
- » Spare tire
- » TuffShell™ -vacuum bonded laminated construction, reinforced with heavy-duty fiberglass and welded aluminum frames
- » Xtend Solar I Package (1-200 watt solar panel with 30 amp controller)

EXECUTIVE PACKAGE (MANDATORY)

- » 15,000 BTU roof mounted A/C
- » Bluetooth® ceiling speaker
- » Bluetooth® exterior speakers
- » Cutting board and sink strainer
- » Dome style digital TV antenna with 5G Wi-Fi prep
- » Interior convenience center light
- » Keyed-Alike® entry and baggage doors
- » Painted fiberglass front cap with LED lighting
- » Power awning with LED lighting
- » Quick recovery gas/electric water heater
- » Quick release fresh water drain
- » Residential high-rise faucet with pull-down sprayer
- » Single basin stainless steel under-mount kitchen sink
- » Smart HDTV
- » Solid swing-down entry steps
- » Stainless steel appliances
- » TravellINK® - Smart RV system that allows for Bluetooth® control of awnings, lighting, slideouts, heating, cooling and more
- » USB/12V charging port

FOUR SEASON PACKAGE (MANDATORY)

- » Double insulated baggage doors
- » Ducted heat to underbelly with cold air return
- » Enclosed cable operated gate valves
- » Enclosed exterior docking station with black tank flush
- » Heated and enclosed underbelly
- » High performance furnace
- » R-38 reflective foil insulation in ceiling and underbelly
- » R-9 block foam insulation in sidewalls

OPTIONS

- » Xtend Solar II Package (2-200 watt solar panels with 30 amp solar controller and 1800 watt inverter) (Replaces standard Xtend Solar I Package)
- » 15,000 BTU ducted 2nd A/C
- » BBQ grill
- » Frameless dual pane windows
- » Freestanding table with chairs (274BHS)
- » Generator prep-LP
- » Main bedroom TV- 32"
- » Observation camera
- » Power Theater Seats IPO Dinette (234RLS and 244RLS)
- » Wi-Fi router

SPECIFICATIONS

May Include Estimated Values

	234RLS	244RLS	274BHS	304BHS
Unloaded Vehicle Weight (lbs.)	7,145	7,610	7,480	8,680
Dry Hitch Weight (lbs.)	1,275	1,360	1,360	1,435
Gross Vehicle Weight Rating (GVWR)	8,900	9,500	9,500	10,115
Cargo (Gross)	1,755	1,890	2,020	1,435
Exterior Length (Pin to Rear)	26' 6"	27' 7"	29' 9"	32' 6"
Exterior Length (Overall)	27' 3"	28' 4"	30' 6"	33' 2"
Exterior Height	12' 7"	12' 8"	12' 7"	12' 9"
Exterior Width	8' 4"	8' 4"	8' 4"	8' 4"
Exterior Width (Slides Out)	11' 4"	13' 11"	11' 4"	13' 11"
Interior Height (Upper Deck)	6' 7"	6' 4"	6' 4"	6' 4"
Interior Height (Lower Deck)	8' 5"	8' 6"	8' 6"	8' 5"
Fresh Water Capacity (Gal.)*	61	61	61	61
Gray Waste Water Capacity (Gal.)	30	60	30	60
Black Waste Water Capacity (Gal.)	30	30	30	30
LP Capacity (lbs.)	60	60	60	60
Tire Size	16"	16"	16"	16"
Awning Size	16'	13'	18'	11' 6", 13'

*Includes water heater

TO LEARN MORE VISIT
openrangerv.com



Highland Ridge RV – Part of the Jayco Family of Companies



LOCAL DEALER INFO



Due to continual research and advances, manufacturer reserves the right to change specifications, design, price, and equipment without notice, and assumes no responsibility for any error in the literature. Some items shown are not included as standard or optional equipment.