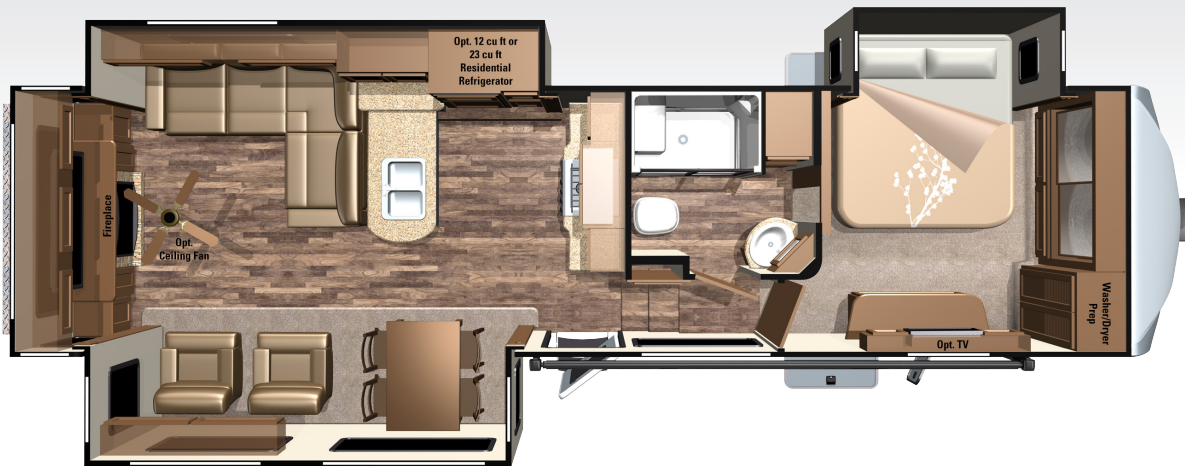




2017 ROAMER RF347RES



STANDARD FEATURES

- » "Maxx Air" Vent Cover
- » 100" Wide Body Frame
- » 16" Aluminum Wheels & Tires
- » 50 Amp Service
- » 60 Lbs of LP Capacity
- » Ext. Utility Center w/ Black Tank Flush
- » Fireplace
- » Heavy Duty Full Extension Drawer Guides
- » Ladder
- » Large Lavatory Sink
- » Lippert Equa-Flex Suspension
- » Lippert Wide-Stance Axles
- » LP Quick Connect
- » Nitrogen Filled Radial Tires
- » Porcelain Toilet w/ Foot Pedal Flush
- » Prepped for Observation Camera
- » PVC Roof Material (12 year Warranty / 10 Year Non-Prorated)
- » Washer/Dryer Prep
- » Water Pump w/ Attached Filter/Strainer

OPTIONAL FEATURES

- » 24" Bedroom TV
- » Appliance Package (23 cu SS Refer, 17" SS Oven, & 30" OTR SS Microwave)
- » BBQ Grill
- » Ceiling Fan
- » Coffee Table Ottoman w/Storage
- » Dometic® Brisk II 13.5k BTU Air Conditioner w/"Quick Cool" Feature (2nd A/C)
- » Dual Pane Windows
- » Dyson Vacuum Cleaner
- » Extreme Arctic Package
- » Fantastic Fan in Bathroom
- » Fantastic Fan in Bedroom
- » French Door to Bedroom
- » Furrion Observation Camera
- » LP Generator Prep
- » Norcold® 12 Cu. Ft. Refrigerator
- » Rear Storage Tray
- » Slide-Out Awning Covers

MANDATORY PACKAGES

EXECUTIVE PACKAGE

- » 30" OTR Microwave
- » ATWOOD® 20 GPH Quick Recovery Gas/Electric Water Heater
- » Bedroom Speakers
- » Corian® Countertops
- » Crown Molding
- » Dometic® Brisk II 15k BTU A/C w/ "Quick Cool" Feature
- » Fantastic Fan in Kitchen
- » Frameless Windows
- » Full View Vented Entrance Door
- » Furrion DV1200 Entertainment System
- » Furrion LED TV
- » Furrion Soundbar in Living Area
- » JT Strong Arm Stabilizer Bars
- » KING Jack™ Digital TV Antenna with Built-in Signal Meter
- » LED Lighting in Ceiling
- » Lippert Ground Control® 2.0 Electric Automatic Leveling System
- » Longitude Power Awning w/LED Awning Light & FLX Guard
- » Multi-Port Satellite Hook-Up
- » Norcold® 8 Cu. Ft. Refrigerator
- » USB/12V Charging Port
- » Western Aspen Cabinet Doors
- » Wired and Framed for 2nd A/C

FOUR SEASONS PACKAGE

- » ATWOOD® Next Gen High Performance Furnace
- » Digital Thermostat
- » Double Insulated Baggage Doors
- » Heated & Enclosed Dump Valves
- » Heated & Enclosed Underbelly -ZERO DEGREE TESTED
- » Heated Storage Area
- » Insulated Slide Floors
- » R-38 Reflective Foil Insulation in Roof & Floor
- » R-9 Insulation in Sidewall

SPECIFICATIONS

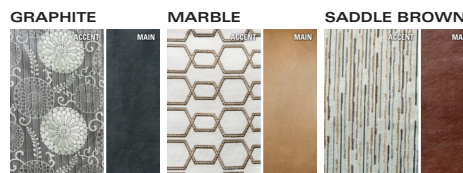
Square Feet	382
UVW	10605
Hitch Weight	2130
GVWR	14210
Cargo (Gross)	3605
Exterior Length	36'4"
Exterior Height	155"
Exterior Width	100"
Fresh Water (Gal.)	85
Gray Water (Gal.)	57
Waste Water (Gal.)	41
Tire Size	16"
Awning Size	16'
Sleeping Capacity	4
Bed Size	72"x 80" King
Sofa Size/Type	L-Sofa w/ Full Tri-Fold Bed
Shower Size	48"x 30"



For more information visit us at:
www.HighlandRidgeRV.com

Note: Features subject to change without notice. Rev. 03/28/16

DÉCOR OPTIONS



MORE ROOM LESS WEIGHT

This is our mission at Highland Ridge RV, Inc. It's the life blood that runs in our veins. It drives us to innovate and revolutionize the RV industry and it's why our products are 10 - 15% lighter than the competition.