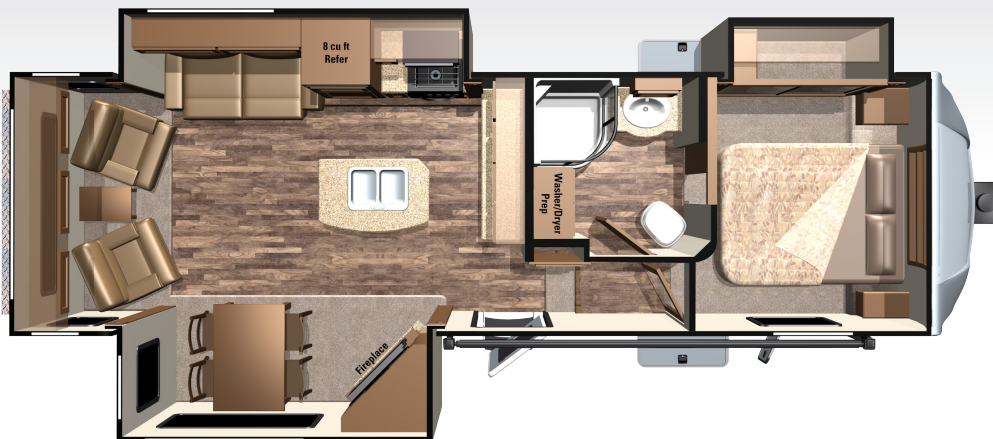




2016 LIGHT LF318RLS

(4)



90° TURNING RADIUS IN 5.5'
SHORT BED 1/2 TON TRUCK

STANDARD FEATURES

- » "King Combo" Pin Box
- » "Maxx Air" Vent Cover
- » (3) 20# LP Tanks
- » *Late Model 1/2 Ton Towable*
- » 100" Wide Body Frame
- » 15" Aluminum Wheels & Tires
- » 50 Amp Service
- » 90° Turn Radius in 5.5' Bed
- » Ext. Utility Center w/ Black Tank Flush
- » Fireplace
- » Generator Prep Capable
- » Ladder
- » Lippert Equa-Flex Suspension
- » Lippert Wide-Stance Axles
- » LP Quick Connect
- » Nitrogen Filled Radial Tires
- » Porcelain Toilet w/ Foot Pedal Flush
- » Prepped for Observation Camera
- » PVC Roof Material
- » Spare Tire
- » Stabilizing System
- » Washer/Dryer Prep

OPTIONAL FEATURES

- » 2 Extra Folding Dinette Chairs
- » 24" Bedroom TV
- » BBQ Grill
- » Coffee Table Ottoman w/Storage
- » Dometic® Brisk II 13.5k BTU Air Conditioner w/"Quick Cool" Feature (2nd A/C)
- » Dometic® Brisk II 15k BTU A/C w/ "Quick Cool" Feature
- » Dual Pane Windows
- » Dyson Vacuum Cleaner
- » Extreme Arctic Package
- » Fantastic Fan in Bathroom
- » Fantastic Fan in Bedroom
- » French Door to Bedroom
- » Furrion Observation Camera
- » Lock Arm Stabilizer Bars
- » LP Generator Prep
- » Power Rear Stabilizer Jacks
- » Rear Storage Tray

MANDATORY PACKAGES

EXECUTIVE PACKAGE

- » ATWOOD® 18 GPH Quick Recovery Gas/Electric Water Heater
- » Bedroom Speakers
- » Concealed Hinges
- » Crown Molding
- » Dometic® Brisk II 13.5k BTU Air Conditioner w/"Quick Cool" Feature (Main A/C)
- » Fantastic Fan in Kitchen
- » Frameless Windows
- » Full View Vented Entrance Door
- » Furrion DV5600 Entertainment System
- » Furrion LED TV
- » Furrion Soundbar in Living Area
- » KING Jack™ Digital TV Antenna with Built-in Signal Meter
- » LED Lighting in Ceiling
- » Longitude Power Awning w/LED Awning Light & FLX Guard
- » Multi-Port Satellite Hook-Up
- » Norcold® 8 Cu. Ft. Refrigerator
- » USB/12V Charging Port
- » Western Aspen Cabinet Doors
- » Wired and Framed for 2nd A/C

FOUR SEASONS PACKAGE

- » ATWOOD® Next Gen High Performance Furnace
- » Digital Thermostat
- » Double Insulated Baggage Doors
- » Heated & Enclosed Dump Valves
- » Heated & Enclosed Underbelly
- » Heated Storage Area
- » Insulated Slide Floors
- » R-38 Insulation in Roof & Floor
- » R-9 Insulation in Sidewall

SPECIFICATIONS

Square Feet	313
UVW	7895
Hitch Weight	1510
GVWR	9995
Cargo (Gross)	2100
Exterior Length (Box)	29'10"
Exterior Length (Overall)	33'10"
Exterior Height	149"
Exterior Width	100"
Fresh Water (Gal.)	50
Gray Water (Gal.)	57
Waste Water (Gal.)	31
Tire Size	15"
Awning Size	13'
Sleeping Capacity	4
Bed Size	60"x 80" Queen
Sofa Size/Type	2-Cushion Full Flip-Out Bed w/Air Mattress
Shower Size	34" Radius



For more information visit us at:
www.HighlandRidgeRV.com

Note: Features subject to change without notice. Rev. 12/09/15

DÉCOR OPTIONS



MORE ROOM LESS WEIGHT

This is our mission at Highland Ridge RV, Inc. It's the life blood that runs in our veins. It drives us to innovate and revolutionize the RV industry and it's why our products are 10 - 15% lighter than the competition.