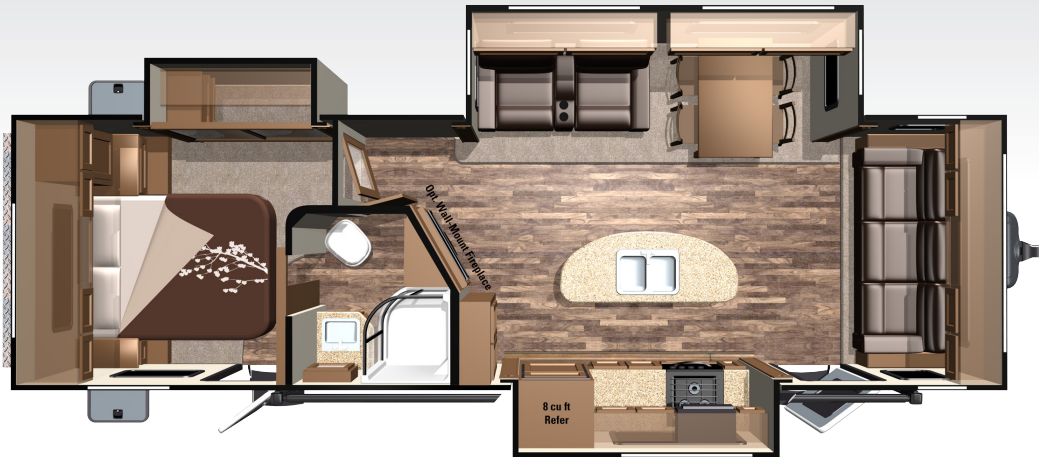




2017 ROAMER RT288FLR

(4)



STANDARD FEATURES

- » "Maxx Air" Vent Cover
- » 100" Wide Body Frame
- » 15" Aluminum Wheels & Tires
- » 50 Amp Service
- » 60 Lbs of LP Capacity
- » Ext. Utility Center w/ Black Tank Flush
- » Front & Rear Stabilizer Jacks
- » Heavy Duty Full Extension Drawer Guides
- » Large Lavatory Sink
- » Lippert Equa-Flex Suspension
- » Lippert Wide-Stance Axles
- » LP Quick Connect
- » Nitrogen Filled Radial Tires
- » Porcelain Toilet w/ Foot Pedal Flush
- » Power Tongue Jack
- » Prepped for Observation Camera
- » PVC Roof Material (12 year Warranty / 10 Year Non-Prorated)
- » Washer/Dryer Prep
- » Water Pump w/ Attached Filter/Strainer

OPTIONAL FEATURES

- » 2 Bar Stools
- » 24" Bedroom TV
- » BBQ Grill
- » Coffee Table Ottoman w/Storage
- » Corian® Sink Covers
- » Dometic® Brisk II 13.5k BTU Air Conditioner w/"Quick Cool" Feature (2nd A/C)
- » Dometic® Brisk II 15k BTU A/C w/ "Quick Cool" Feature
- » Dual Pane Windows
- » Dyson Vacuum Cleaner
- » Extreme Arctic Package
- » Fantastic Fan in Bathroom
- » Fantastic Fan in Bedroom
- » Fantastic Fan in Kitchen
- » French Door to Bedroom
- » Furrion Observation Camera
- » Ladder
- » Lock Arm Stabilizer Bars
- » One-Piece Fiberglass Front Cap
- » Power Front & Rear Stabilizer Jacks
- » Rear Storage Tray
- » Slide-Out Awning Covers
- » Wall-Mount Fireplace

MANDATORY PACKAGES

EXECUTIVE PACKAGE

- » ATWOOD® 18 GPH Quick Recovery Gas/Electric Water Heater
- » Bedroom Speakers
- » Corian® Countertops
- » Crown Molding
- » Dometic® Brisk II 13.5k BTU Air Conditioner w/"Quick Cool" Feature (Main A/C)
- » Frameless Windows
- » Full View Vented Entrance Door
- » Furrion DV1200 Entertainment System
- » Furrion LED TV
- » Furrion Soundbar in Living Area
- » KING Jack™ Digital TV Antenna with Built-in Signal Meter
- » LED Lighting in Ceiling
- » Longitude Power Awning w/LED Awning Light & FLX Guard
- » Multi-Port Satellite Hook-Up
- » Norcold® 8 Cu. Ft. Refrigerator
- » USB/12V Charging Port
- » Western Aspen Cabinet Doors
- » Wired and Framed for 2nd A/C

FOUR SEASONS PACKAGE

- » ATWOOD® Next Gen High Performance Furnace
- » Digital Thermostat
- » Double Insulated Baggage Doors
- » Heated & Enclosed Dump Valves
- » Heated & Enclosed Underbelly -ZERO DEGREE TESTED
- » Insulated Slide Floors
- » R-38 Reflective Foil Insulation in Roof & Floor
- » R-9 Insulation in Sidewall

SPECIFICATIONS

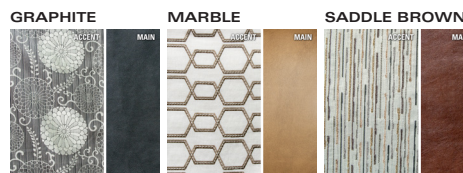
Square Feet	316
UVW	7815
Hitch Weight	1000
GVWR	9778
Cargo (Gross)	1963
Exterior Length (Box)	29'10"
Exterior Length (Overall)	33'6"
Exterior Height	140"
Exterior Width	100"
Fresh Water (Gal.)	50
Gray Water (Gal.)	62
Waste Water (Gal.)	31
Tire Size	15"
Awning Size	19'
Sleeping Capacity	4
Bed Size	60"x 80" Queen
Sofa Size/Type	3-Cushion Queen Flip-Out Bed w/Air Mattress
Shower Size	34" Radius



For more information visit us at:
www.HighlandRidgeRV.com

Note: Features subject to change without notice. Rev. 03/28/16

DÉCOR OPTIONS



MORE ROOM LESS WEIGHT

This is our mission at Highland Ridge RV, Inc. It's the life blood that runs in our veins. It drives us to innovate and revolutionize the RV industry and it's why our products are 10 - 15% lighter than the competition.