

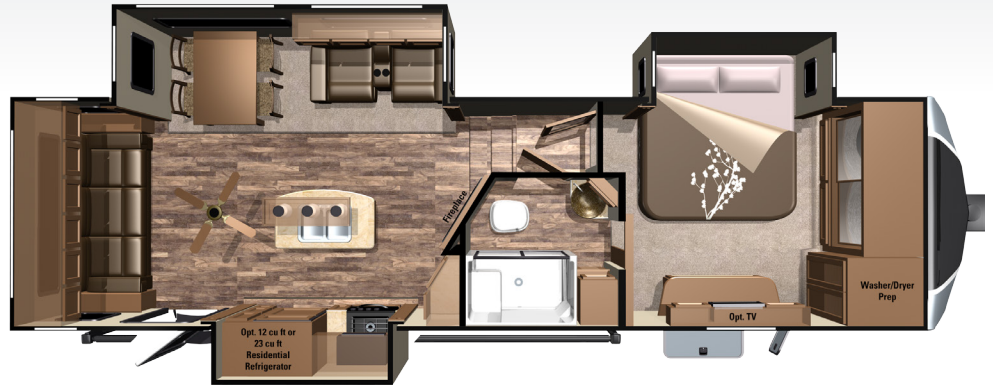


2017 OPEN RANGE 3X 3X309RLS

ZZZ (4)

STANDARD FEATURES

- » (3) 20# LP Tanks
- » 102" Wide Body Frame
- » 16" Aluminum Wheels & Tires
- » 3,000# Towing Receiver
- » 30" OTR Stainless Steel Convection Microwave
- » 3X Thermal Barrier Sidewall
- » 50 Amp Service
- » 6'4" X 32" Full-View Vented Entrance Door w/Keyless Entry
- » 7'0" Slide-Out Height
- » Arched Vaulted Ceiling
- » Ceiling Fan
- » Fireplace
- » Heavy Duty Full Extension Drawer Guides
- » Lippert Equa-Flex Suspension
- » Lippert Wide-Stance Axles
- » Newly Designed Front Cap w/LED Lights
- » Nitrogen Filled Radial Tires
- » Norcold® 8 Cu. Ft. Refrigerator
- » Prepped for Observation Camera
- » Prepped for Portable Solar Panels
- » Pull-Out Wastebasket
- » PVC Roof Material (12 year Warranty / 10 Year Non-Prorated)
- » Removable Rear Ladder
- » Residential Window Frames w/MCD® Roller Shades
- » Stainless Steel Residential Style 22" Oven
- » Stainless Steel Sink w/ High-Rise Stainless Steel Faucet
- » Washer/Dryer Prep
- » Water Pump w/Attached Filter/Strainer



OPTIONAL FEATURES

- » 2 Bar Stools
- » 2 Extra Folding Dinette Chairs
- » 24" Bedroom TV
- » Coffee Table Ottoman w/Storage
- » Dometic® Brisk II 13.5k BTU Air Conditioner w/"Quick Cool" Feature (2nd A/C)
- » Dual Pane Windows
- » Dyson Vacuum Cleaner
- » Fantastic Fan in Bathroom
- » Fantastic Fan in Bedroom
- » Frigidaire 23 Cu. Ft. Side-by-Side Residential Refrigerator
- » Furrion Observation Camera
- » Lift Top Coffee Table
- » LP Generator Prep
- » Norcold® 12 Cu. Ft. Refrigerator
- » Onan® 5500 LP Generator
- » Slide-Out Awning Covers
- » TrailAir® Air Ride Pin Box

SPECIFICATIONS

Square Feet	373
UVW	10575
Hitch Weight	2105
GVWR	14105
Cargo (Gross)	3530
Exterior Length (Overall)	33'
Exterior Height	157"
Exterior Width	102"
Fresh Water (Gal.)	85
Gray Water (Gal.)	98
Waste Water (Gal.)	41
Tire Size	16"
Awning Size	18'
Sleeping Capacity	4
Bed Size	72"x 80" King
Sofa Size/Type	3-Cushion Queen Tri-Fold Bed
Shower Size	48"x 30"

MANDATORY PACKAGES

EXECUTIVE PACKAGE

- » 6-Person Extendable Table (Dual Leaf)
- » ATWOOD® 20 GPH Quick Recovery Gas/Electric Water Heater
- » Bedroom Speakers
- » Concealed Hinges
- » Corian® Countertops
- » Dometic® Brisk II 15k BTU A/C w/"Quick Cool" Feature
- » Dovetail Drawer Construction
- » Fantastic Fan in Kitchen
- » Flush Mount Corian® Stove Cover
- » Furrion DV1200 Entertainment System
- » Furrion LED TV
- » Furrion Soundbar in Living Area
- » JT Strong Arm Stabilizer Bars
- » KING Jack™ Digital TV Antenna with Built-in Signal Meter
- » Latitude Armless Automatic Power Awning w/LED Awning Light & FLX Guard
- » Lippert Ground Control® 3.0 Electric Automatic Leveling System (4-point)
- » Metal Slam Latch Baggage Doors
- » Multi-Port Satellite Hook-Up
- » One-Piece Fiberglass Shower
- » Raised Panel Cabinet Doors
- » USB/12V Charging Port
- » Western Aspen Cabinet Doors
- » Wired and Framed for 2nd A/C
- » Wood Framed Sliding Wardrobe Doors

FOUR SEASONS PACKAGE

- » ATWOOD® Next Gen High Performance Furnace
- » Digital Thermostat
- » Double Insulated Baggage Doors
- » Extreme Arctic Package
- » Heated & Enclosed Dump Valves
- » Heated & Enclosed Underbelly -ZERO DEGREE TESTED
- » Heated Storage Area
- » Insulated Slide Floors
- » R-14 Insulation in Sidewall



For more information visit us at:
www.HighlandRidgeRV.com

Note: Features subject to change without notice. Rev. 03/24/16

DÉCOR OPTIONS



MORE ROOM LESS WEIGHT

This is our mission at Highland Ridge RV, Inc. It's the life blood that runs in our veins. It drives us to innovate and revolutionize the RV industry and it's why our products are 10 - 15% lighter than the competition.