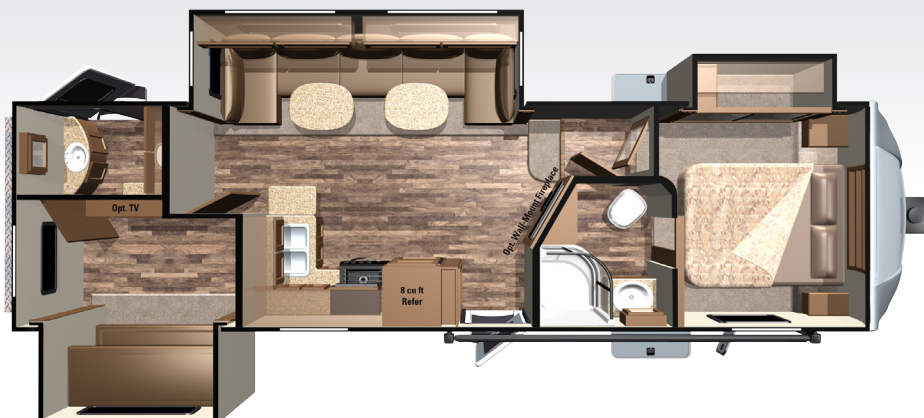




2017 LIGHT LF315BHS

(6)



90° TURNING RADIUS IN 5.5'
SHORT BED 1/2 TON TRUCK

STANDARD FEATURES

- » *Late Model 1/2 Ton Towable*
- » "King Combo" Pin Box
- » "Maxx Air" Vent Cover
- » 100" Wide Body Frame
- » 15" Aluminum Wheels & Tires
- » 50 Amp Service
- » 60 Lbs of LP Capacity
- » 90° Turn Radius in 5.5' Bed
- » Ext. Utility Center w/ Black Tank Flush
- » Generator Prep Capable
- » Ladder
- » Lippert Equa-Flex Suspension
- » Lippert Wide-Stance Axles
- » LP Quick Connect
- » Nitrogen Filled Radial Tires
- » Porcelain Toilet w/ Foot Pedal Flush
- » Prepped for Observation Camera
- » PVC Roof Material (12 year Warranty / 10 Year Non-Prorated)
- » Spare Tire
- » Stabilizing System
- » Water Pump w/ Attached Filter/Strainer

OPTIONAL FEATURES

- » 24" Bedroom TV
- » BBQ Grill
- » Coffee Table Ottoman w/Storage
- » Dometic® Brisk II 13.5k BTU Air Conditioner w/"Quick Cool" Feature (2nd A/C)
- » Dometic® Brisk II 15k BTU A/C w/"Quick Cool" Feature
- » Dual Pane Windows
- » Dyson Vacuum Cleaner
- » Extreme Arctic Package
- » Fantastic Fan in Bathroom
- » Fantastic Fan in Bedroom
- » Fantastic Fan in Bunkroom
- » Fantastic Fan in HALF Bathroom
- » French Door to Bedroom
- » French Door to Bunkroom
- » Furrion Observation Camera
- » Lock Arm Stabilizer Bars
- » LP Generator Prep
- » Power Rear Stabilizer Jacks
- » Rear Storage Tray
- » Wall-Mount Fireplace

MANDATORY PACKAGES

EXECUTIVE PACKAGE

- » ATWOOD® 18 GPH Quick Recovery Gas/Electric Water Heater
- » Bedroom Speakers
- » Concealed Hinges
- » Crown Molding
- » Dometic® Brisk II 13.5k BTU Air Conditioner w/"Quick Cool" Feature (Main A/C)
- » Fantastic Fan in Kitchen
- » Frameless Windows
- » Full View Vented Entrance Door
- » Furrion DV1200 Entertainment System
- » Furrion LED TV
- » Furrion Soundbar in Living Area
- » KING Jack™ Digital TV Antenna with Built-in Signal Meter
- » LED Lighting in Ceiling
- » Longitude Power Awning w/LED Awning Light & FLX Guard
- » Multi-Port Satellite Hook-Up
- » Norcold® 8 Cu. Ft. Refrigerator
- » USB/12V Charging Port
- » Western Aspen Cabinet Doors
- » Wired and Framed for 2nd A/C

FOUR SEASONS PACKAGE

- » ATWOOD® Next Gen High Performance Furnace
- » Digital Thermostat
- » Double Insulated Baggage Doors
- » Heated & Enclosed Dump Valves
- » Heated & Enclosed Underbelly -ZERO DEGREE TESTED
- » Heated Storage Area
- » Insulated Slide Floors
- » R-38 Reflective Foil Insulation in Roof & Floor
- » R-9 Insulation in Sidewall

SPECIFICATIONS

Square Feet	336
UVW	8900
Hitch Weight	1360
GVWR	10995
Cargo (Gross)	2095
Exterior Length (Box)	31'11"
Exterior Length (Overall)	35'10"
Exterior Height	149"
Exterior Width	100"
Fresh Water (Gal.)	50
Gray Water (Gal.)	62
Waste Water (Gal.)	62
Tire Size	15"
Awning Size	16'
Sleeping Capacity	6
Bed Size	60"x 80" Queen
Sofa Size/Type	U-Lounge Queen Fold-Out Bed w/Air Mattress
Shower Size	34" Radius



For more information visit us at:
www.HighlandRidgeRV.com

Note: Features subject to change without notice. Rev. 04/27/16

DÉCOR OPTIONS



MORE ROOM LESS WEIGHT

This is our mission at Highland Ridge RV, Inc. It's the life blood that runs in our veins. It drives us to innovate and revolutionize the RV industry and it's why our products are 10 - 15% lighter than the competition.