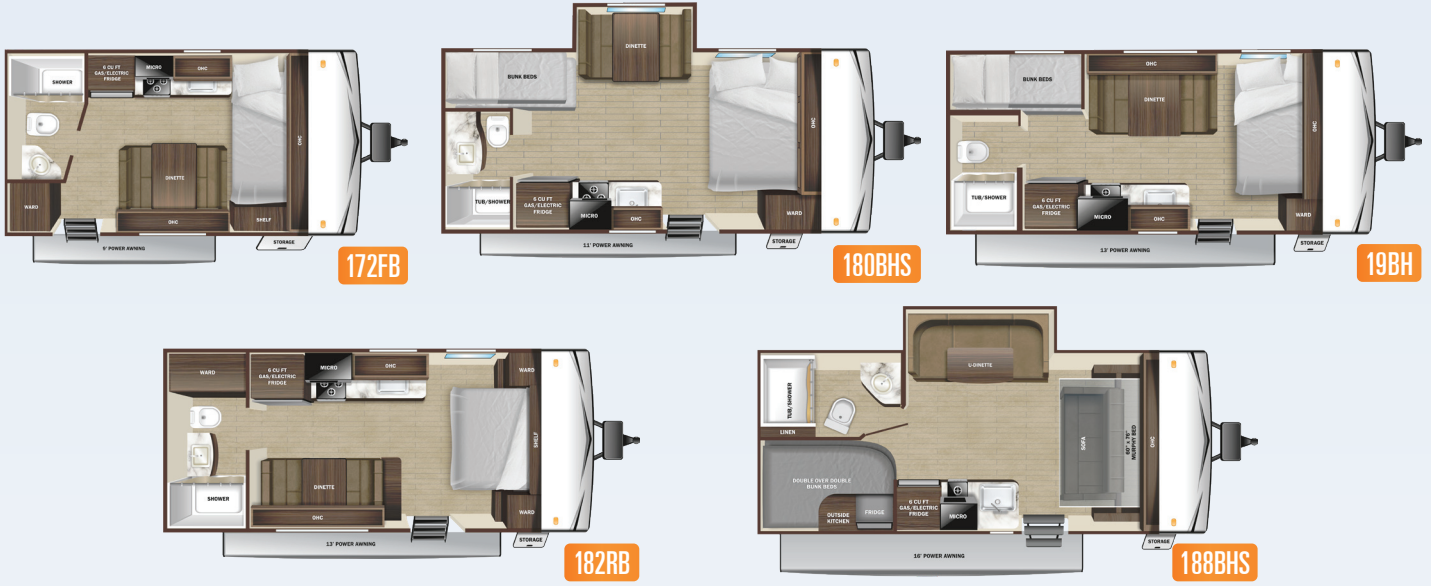
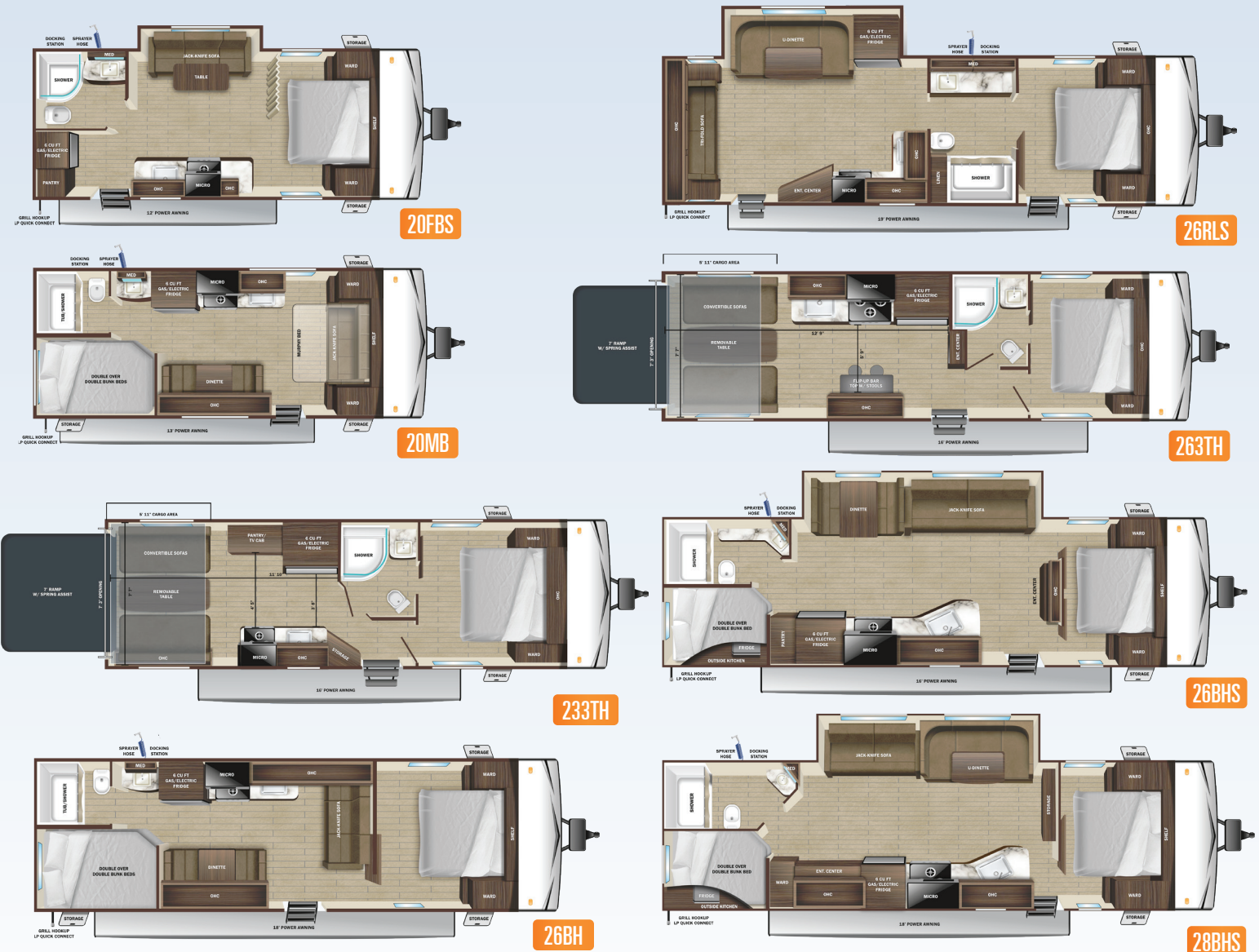


Single Axle



Dual Axle



Optional 8 cu. ft. 12V refrigerator (available on all floorplans shown)

STANDARD INTERIOR EQUIPMENT

- » 75 lb. ball bearing drawer guides
- » 81" interior height
- » AM/FM/Bluetooth® radio with indoor/outdoor zoned speakers
- » Closeable A/C vents
- » Flush floor slides with residential vinyl flooring
- » Foot flush toilet
- » Hardwood cabinet doors
- » LED interior lighting
- » Pleated blackout night shades
- » Pocket-screwed lumbercore cabinet construction
- » Pressed membrane kitchen countertops
- » Range hood
- » Residential high-rise kitchen faucet with pull-down sprayer
- » Single basin under-mount kitchen sink
- » Storage below main bed

STANDARD EXTERIOR EQUIPMENT

- » 120 GFCI protected receptacle
- » 5/8" main floor decking
- » 96" exterior width
- » Black front diamond plate protection
- » Exterior docking center (dual axle models)
- » Detachable power cords
- » Fiberglass insulation
- » Flexible LP lines
- » Galvanized wheel wells
- » Grab handle
- » In-frame battery rack
- » Magnetic baggage door catches
- » Magnum Roof™ system
- » Marine grade exterior speakers (2)
- » PVC roofing membrane (limited lifetime warranty)

- » Rain guttering with molded drip spouts
- » Rear camera prep
- » Safety bumper with drain hose carrier and end caps
- » Self-adjusting electric brakes and E-Z Lube® axles
- » Thermal Seal- enclosed, insulated, and heated underbelly and fully insulated roof with a PVC roofing membrane (dual axle models)
- » Tinted safety-glass windows throughout

CUSTOMER CONVENIENCE PACKAGE (MANDATORY)

- » 13,500 BTU roof mounted A/C
- » 17" oven (dual axle models)
- » 2-burner range with glass cover (single axle models)
- » 3-burner range with glass cover (dual axle models)
- » Dome style digital TV antenna
- » Gas/electric water heater
- » Microwave
- » Powered awning with LED lighting
- » Powered bathroom vent
- » Nitrogen filled radial tires
- » Residential vinyl flooring throughout
- » Solar prep
- » Stabilizer jacks (4)
- » Solid swing down step (main)
- » Entrance door with window and shade prep
- » Water heater bypass

OPTIONS

- » Xtend Solar I Package (200 watt solar panel with 30 amp controller)
- » 15,000 BTU A/C (dual axle models)
- » 50 amp service with 2nd A/C (26BHS, 26RLS, 28BHS)
- » 8 cu. ft. 12V refrigerator
- » Smart TV
- » Spare tire with carrier (mandatory on single axle models)

SPECIFICATIONS May Include Estimated Values	172FB†	180BHS†	198H†	182PB	188BHS	20FBS	20MB	233TH	26BH**	26RLS	263TH	26BHS	28BHS
	Unloaded Vehicle Weight (lbs.)	3,075	3,760	3,460	3,470	TBD	4,595	4,183	5,240	4,640	5,780	5,020	5,730
Dry Hitch Weight (lbs.)	280	410	360	380	TBD	465	530	845	580	700	845	705	760
Gross Vehicle Weight Rating (GVWR)	3,750	4,900	4,450	4,250	4,900	6,000	5,250	7,500	6,500	7,500	7,500	7,500	7,600
Cargo (Gross)	675	1,140	990	780	TBD	1,405	1,067	2,260	1,860	1,720	2,480	1,770	1,435
Exterior Length (Overall)	19' 3"	22' 2"	22' 4"	22' 11"	23' 7"	23' 8"	24' 6"	28' 4"	29' 6"	30' 1"	30' 5"	30' 8"	33' 10"
Exterior Height	10' 2"	10' 6"	10' 7"	10' 2"	10' 2"	11' 0"	10' 6"	10' 6"	10' 6"	10' 11"	11' 1"	11' 1"	11' 1"
Exterior Width	8' 0"	8' 0"	8' 0"	8' 0"	8' 0"	8' 0"	8' 0"	8' 0"	8' 0"	8' 0"	8' 0"	8' 0"	8' 0"
Exterior Width (Slides Out)	N/A	10' 1"	N/A	N/A	10' 6"	9' 5"	N/A	N/A	N/A	11' 0"	N/A	11' 0"	11' 0"
Interior Height	6' 9"	6' 9"	6' 9"	6' 9"	6' 9"	6' 9"	6' 9"	6' 9"	6' 9"	6' 9"	6' 9"	6' 9"	6' 9"
Fresh Water Capacity (Gal.)*	26	26	26	26	26	48	48	48	48	48	48	48	48
Gray Waste Water Capacity (Gal.)	19.9	19.9	19.9	19.9	39	32.5	32.5	39	32.5	39	39	32.5	39
Black Waste Water Capacity (Gal.)	19.9	19.9	19.9	19.9	39	32.5	32.5	39	32.5	39	39	32.5	39
LP Capacity (lbs.)	20	20	20	20	20	60	60	60	60	60	60	60	60
Tire Size	14"	15"	15"	14"	15"	14"	14"	14"	14"	14"	14"	15"	14"
Awning Size	9'	11'	13'	13'	16'	12'	18'	16'	18'	19'	16'	16'	18'

*Includes Water Heater

**Specifications, weights, measurements, and capacities above are from model year 2022 and are estimates only for model year 2023. Actual specs, weights, measurements, and capacities may be different for model year 2023 than what is listed above. For the most up-to-date model year 2023 specs, please speak with your local Highland Ridge dealer, visit <http://www.HighlandRidgeRV.com>, and check the yellow sticker on the door of your Highland Ridge RV before purchasing, operating, and towing the RV.

† Only available in Western United States and Western Canada

‡ Only available in Eastern United States and Eastern Canada

TO LEARN MORE VISIT
openrangerv.com



Highland Ridge RV – Part of the Jayco Family of Companies

LOCAL DEALER INFO



Due to continual research and advances, manufacturer reserves the right to change specifications, design, price, and equipment without notice, and assumes no responsibility for any error in the literature. Some items shown are not included as standard or optional equipment. 2032619.2023